

## Tube Facing Tool

NODHA tube facing tool are designed to machine square, burr-free tube ends for autogenous welding. Tube and installation manufacturers from the high-purity gas, semiconductor, pharmaceuticals, food processing, beverages, solar and chemical industries benefit from the mobile, high-quality and burr-free processing of tube ends. With the battery version, we offer the better solution, which is independent of power supply, for extending or repairing an existing plant with limited space availability.



### Features

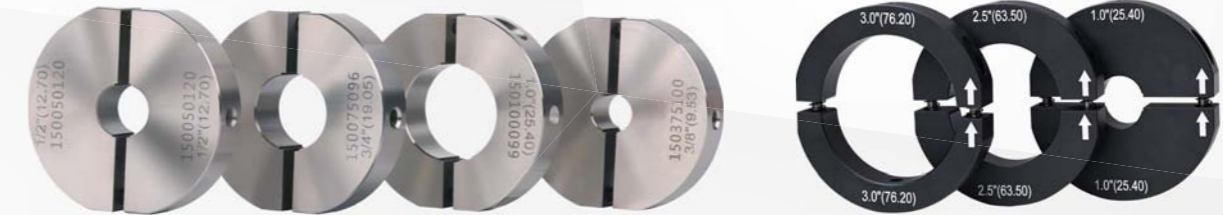
- Corded and Cordless for option
- Corded series cover the pipe size 3-152.4mm / 1/8-6 in.
- Cordless series cover the pipe size 3-63.5mm / 1/8-2 1/2 in.
- Maximum wall thickness 3mm / 0.118 in.
- Quick facing inserts adjustment without disassembly
- Beveling capability with optional tool holder
- Design for mobility and easy operation
- Compact design, light weight



## Collets

Stainless steel or Aluminium collet sets are available in standard sizes, ensure precise clamping of tubes.

Each unit standard supply complete with 5 sizes collets. Customized collets for Micro-Fit sizes are available.



Size	F1.0	F1.5	F2.0	F2.5	F3.0	F4.5	F6.0
Collets Material	SS304			Alu.6061			
1/4							
3/8							
1/2							
3/4							
1							
1 1/2							
2							
2 1/2							
3							
4							
4 1/2							
6							

### Package

All sizes Facing tools are packaged in durable plastic case with EVA foam for transportation and well storage. Corded series tools' case with draw-bar for easy handling.



## Cordless Tube Facing tool



### Specifications

Model	F1.0DC	F1.5DC	F2.0DC	F2.5DC
Tube OD	3-25.4mm 0.12-1.0 in.	3-38.1mm 0.12-1.5 in.	6-50.8mm 0.24-2.0 in.	9-63.5mm 0.36-2.5 in.
Max. Wall Thickness	3mm / 0.118 in.			
RPM	0-400			
Feed Travel	7mm / 0.276 in.			
Feed Rate per circle	2mm / 0.079 in.			
Feed Rate per scale	0.02mm / 0.0008 in.			
Feed Method	Handwheel			
Collets Thickness	Standard Collets: 12mm / 0.47 in.			
	Customized Collets: 6mm / 0.24 in.			
Collets Material	Stainless Steel 304			
Power Supply	220-240V 1Ph 50/60 Hz			
Battery	18V 2.0AH Lithium ion rechargeable battery			
Motor	BOSCH GSR180-Li			
Sound Level	Approx 76			
Vibration Level m/s <sup>2</sup>	< 2.5			
Applied Standard	CE EN 60204-1:2018, EN IEC 61000-6-4:2019, EN IEC 61000-6-2:2019, ISO12100:2010			
Working Weight	2.1 kgs	2.4 kgs	2.55 kgs	2.7 kgs
Shipping Weight	7.7 kgs	8 kgs	8.1 kgs	8.3 kgs
Package	Durable plastic case with EVA foam			
Packing Size	520*440*210mm			



### Inserts & Tool holder

Two-sided inserts with protective coating against tool wear. This enables the preparation of tubes made of high-alloy, unalloyed and low-alloy steels and aluminum with high precision very quickly and efficiently.



Part No.	Length	Width	Thickness	Application
CI1108035	11mm	8mm	3.5mm	F1.0, F1.5, F2.0, F2.5

- Beveling tool holder is available for all sizes facing tool as an optional supply
- The position adjustable tool holder makes the facing inserts quick adjusted without disassembly.

### Standard Supply & Package

Tube facing tool	Rechargeable battery -2 pcs
Inserts holder	Battery charger -1 pce
Inserts -2 pcs	Manual
Collets - 5 sizes	Spare screws set
Tool set	Storage case - 1 pce





## Corded Tube Facing tool



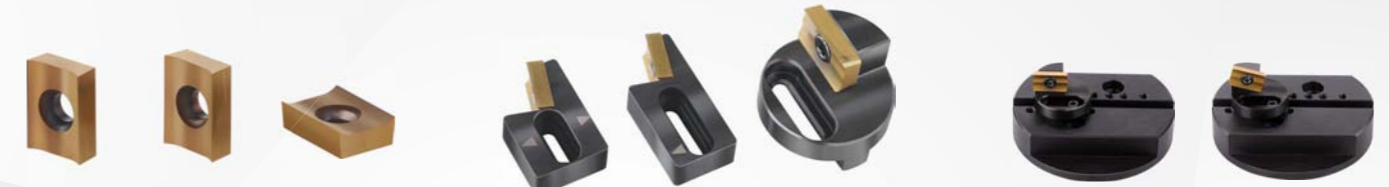
## Specifications

Model	F1.0AC	F1.5AC	F2.0AC	F2.5AC
Tube OD	3-25.4mm 0.12-1.0 in.	3-38.1mm 0.12-1.5 in.	6-50.8mm 0.24-2.0 in.	9-63.5mm 0.36-2.5 in.
Max. Wall Thickness	3mm / 0.118 in.	5mm / 0.197 in.		
RPM	0-44			
Feed Travel	7mm / 0.276 in.			
Feed Rate per circle	2mm / 0.079 in.			
Feed Rate per scale	0.02mm / 0.0008 in.			
Feed Method	Handwheel			
Collets Thickness	Standard Collets: 12mm / 0.47 in.			
	Customized Collets: 6mm / 0.24 in.			
Collets Material	Stainless Steel 304			
Power Supply	220-240V 1Ph 50/60 Hz			
Motor	METABO BEV 1300			
Motor Power	1300W			
Sound Level	Approx 83			
Vibration Level m/s <sup>2</sup>	< 2.5			
Applied Standard	CE EN 60204-1:2018, EN IEC 61000-6-4:2019, EN IEC 61000-6-2:2019, ISO12100:2010			
Working Weight	4.8 kgs	6 kgs	6.1 kgs	6.2 kgs
Shipping Weight	14 kgs	15 kgs	15.5 kgs	16 kgs
Package	Durable draw-bar plastic case with EVA foam			
Packing Size	650*490*265mm			



## Inserts & Tool holder

Two-sided inserts with protective coating against tool wear. This enables the preparation of tubes made of high-alloy, unalloyed and low-alloy steels and aluminum with high precision very quickly and efficiently.

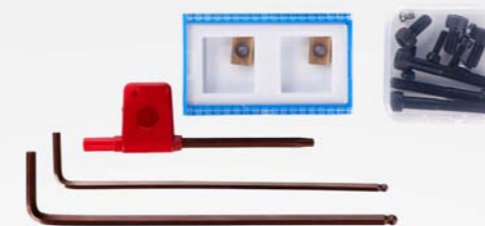


Part No.	Length	Width	Thickness	Application
CI1108035	11mm	8mm	3.5mm	F1.0, F1.5, F2.0, F2.5

- Beveling tool holder is available for all sizes facing tool as an optional supply
- The position adjustable tool holder makes the facing inserts quick adjusted without disassembly.

## Standard Supply & Package

Tube facing tool	Tool set
Inserts holder	Manual
Inserts -2 pcs	Spare screws set
Collets - 5 sizes	Storage case - 1 pce

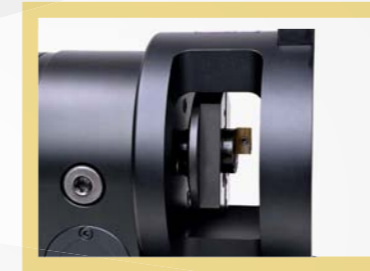


## Corded Tube Facing tool



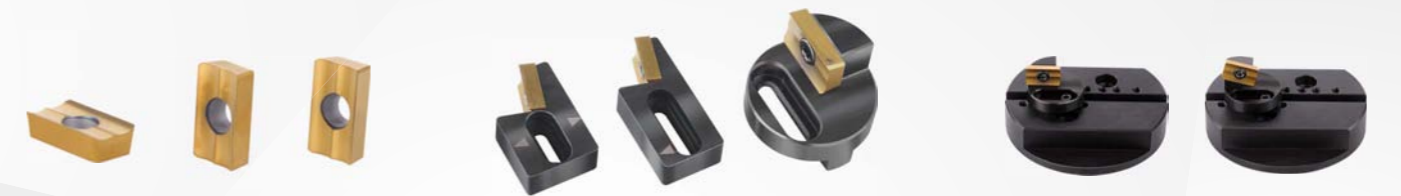
### Specifications

Model	F3.0AC	F4.5AC	F6.0AC
Tube OD	12.7-76.2mm 0.5-3.0 in.	12.7-114.3mm 0.5-4.5 in.	50.8-152.4mm 2-6 in.
Max. Wall Thickness	5mm / 0.197 in.		
RPM	0-30		
Feed Travel	19.5mm / 0.768 in.		
Feed Rate per circle	3mm / 0.118 in.		
Feed Rate per scale	0.02mm / 0.0008 in.		
Feed Method	Handwheel		
Collets Thickness	Standard Collets:20mm / 0.79 in.	Standard Collets:25mm / 0.98 in.	Standard Collets:30mm / 1.18 in.
Collets Material	Aluminium 6061		
Power Supply	220-240V 1Ph 50/60 Hz		
Motor	METABO BEV 1300		
Motor Power	1300W		
Sound Level	Approx 83		
Vibration Level m/s2	2.5		
Applied Standard	CE EN 60204-1:2018, EN IEC 61000-6-4:2019, EN IEC 61000-6-2:2019, ISO12100:2010		
Working Weight	16.4 kgs	18.2 kgs	23 kgs
Shipping Weight	30 kgs	32 kgs	36 kgs
Package	Durable draw-bar plastic case with EVA foam		
Packing Size	700*520*400mm		
	Customize bigger size is available		



### Inserts & Tool holder

Two-sided inserts with protective coating against tool wear. This enables the preparation of tubes made of high-alloy, unalloyed and low-alloy steels and aluminum with high precision very quickly and efficiently.

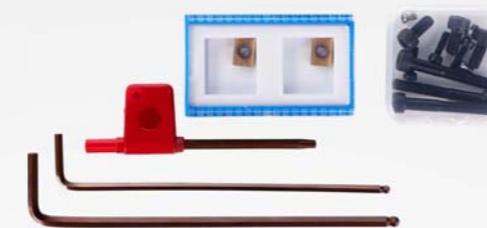


Part No.	Length	Width	Thickness	Application
CI1659546	16.5mm	9.5mm	4.6mm	F3.0, F4.5, F6.0

- Beveling tool holder is available for all sizes facing tool as an optional supply
- The position adjustable tool holder makes the facing inserts quick adjusted without disassembly.

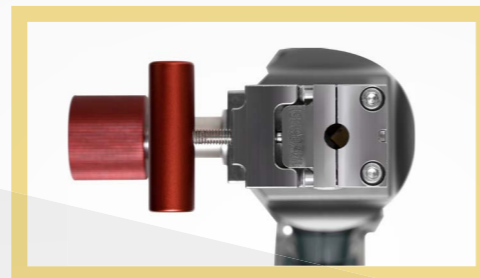
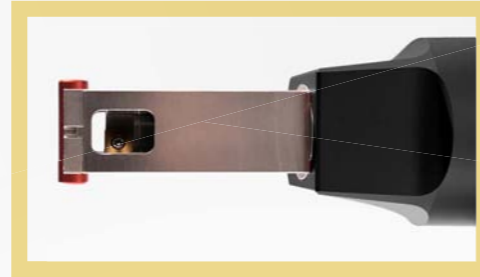
### Standard Supply & Package

Tube facing tool	Tool set
Inserts holder	Manual
Inserts - 2 pcs	Spare screws set
Collets - 5 sizes	Storage case - 1 pce





## Micro-Feed Tube Facing tool



## Specifications

Model	F1.0DC-MF		
Tube OD	3.75, 6.35, 9.53, 12.7mm 1/8" 1/4" 3/8" 1/2"	Battery	Li-Power 18V 2.0Ah battery
Max. Wall Thickness	3mm / 0.118 in.	Motor	METABO BS 18 LT
RPM	0-400	Sound Level	Approx 76
Feed Travel	7mm / 0.276 in.	Vibration Level m/s <sup>2</sup>	< 2.5
Feed Method	Handwheel	Applied Standard	CE
Collets Thickness	5.5mm / 0.217 in.	Working Weight	2.1 kgs
Min. Tube Length	6mm / 0.236"	Shipping Weight	7.7 kgs
Collets Material	Stainless Steel 304	Package	Durable plastic case with EVA foam
Power Supply	220-240V 1Ph 50/60 Hz	Packing Size	520*440*210mm

## Inserts

Two-sided inserts with protective coating against tool wear. This enables the preparation of tubes made of high-alloy, unalloyed and low-alloy steels and aluminum with high precision very quickly and efficiently.



Part No.	Length	Width	Thickness
CI908536	9mm	8.5mm	3.6mm

## Standard Supply & Package

Tube facing tool	Rechargeable battery -2 pcs
Inserts holder	Battery charger -1 pce
Inserts -2 pcs	Manual
Collets -3 sizes	Spare screws set
Tool set	Storage case - 1 pce

## Modification for Micro facing on Standard machine

