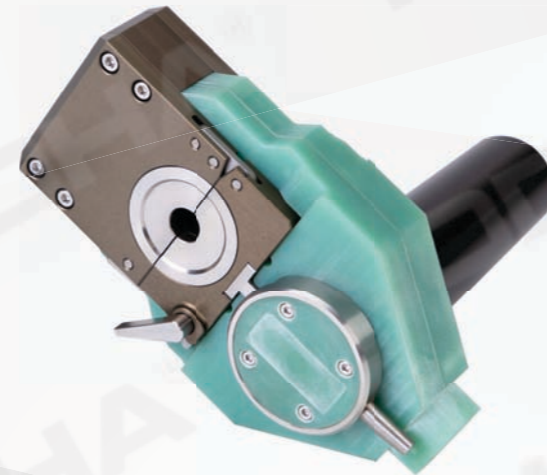
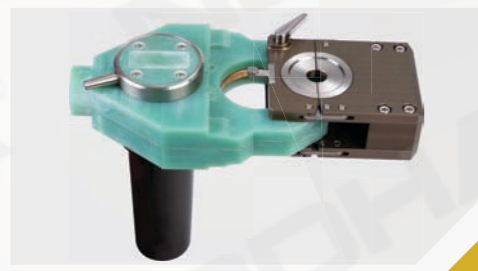


CLOSED CHAMBER WELDING HEAD 1/4 - 1 in.

Model	BH10
Power Source	P200
Weldable Material	CS, SS, Ti alloy
Tube OD	Φ6.35-Φ25.4mm
Inch	1/4 - 1 in.
Max. Wall Thickness	2mm
Standard Collet Size	1/4, 3/8, 1/2, 3/4, 1 in.
Weld Preparation	Square butt joint
Cooling	Water
Rotation Speed	0.3-6 rpm
Tungsten Electrode Dia.	1.6mm
Shielding Gas	Argon
Cable Assembly Length	9.5M
Head Code	16
Weight	1.8 kg (W/o Cable)
Shipping Weight	11 kgs
Package	Durable plastic case
Package Size	580*450*220mm



BH10 PRODUCT DETAILS



Features

Available for outside diameters ranging from 1/4 to 1 in.

One button running, easy operation

Self fusion welding method

Adopts sealed design, and the protection effect is more sufficient

Flexible automatic centering fixture, precise positioning

Suitable for tube welding of thin-walled carbon steel, stainless steel, titanium and titanium alloys

Standard Supply

BH10 Welding Head - 1 unit
Collets - 1 set
Centering gauge - 1 pce
Electrode alignment block - 1pce
Tungsten Electrode Grinder - 1 unit

Cross screwdriver - 1 pce
Tungsten Electrode 1.6mm - 2 pcs
Air hose adapter(ø10mm→ø6mm) - 1 pce
4M Fluorine gas hose(ø 6mm) -1 pce
9.5M Cable assembly - 1 pce

Collets size (S.S.)

mm	Inch	Order No.
6.35	1/4	10H-6.35
9.53	3/8	10H-9.53
12.7	1/2	10H-12.7
19.05	3/4	10H-19.5
25.4	1	10H-25.4



Dimension Figure

