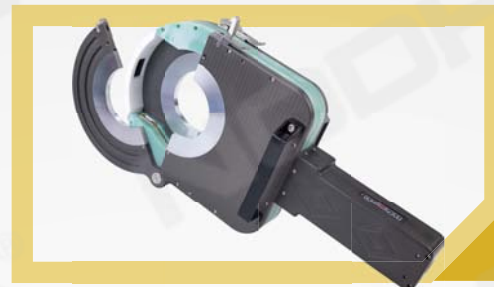
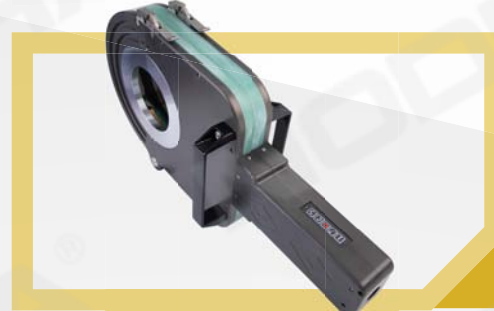
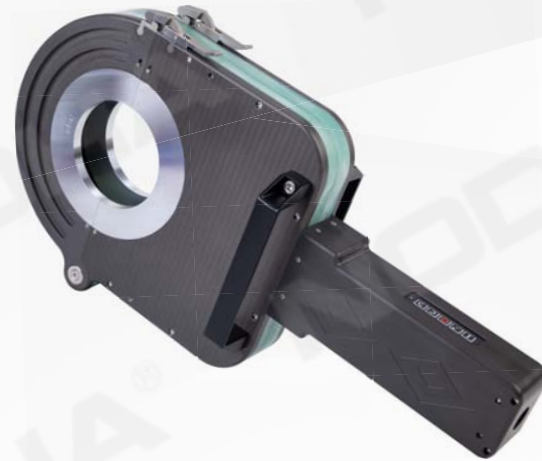


CLOSED CHAMBER WELDING HEAD 2-6 1/2 in.

BH170

Model	BH170
Power Source	P200
Weldable Material	CS, SS, Ti alloy
Tube OD	Φ50.8-Φ165.2mm
Inch	2-6 1/2 in.
Max. Wall Thickness	3mm
Standard Collet Size	2, 2 1/2, 3, 3 1/2, 4, 4 1/2, 5 1/2, 6, 6 1/2 in.
Weld Preparation	Square butt joint
Cooling	Water
Rotation Speed	0.123-0.246rpm
Tungsten Electrode Dia.	2.4mm
Shielding Gas	Argon
Cable Assembly Length	9.5 M
Head Code	148
Weight	10.5 kg (W/o Cable)
Shipping Weight	27 kgs
Package	Hard-sided case
Package Size	750*410*290mm



Standard Supply

BH170 Welding Head - 1 unit
Collets - 1 set
Tungsten Electrode Grinder - 1 unit
Allen key -1 set
Tungsten Electrode 2.4mm - 2 pcs
Air hose adapter(ø10mm→ø6mm) - 1 pce
5M Fluorine gas hose(ø 6mm) -1 pce
9.5M Cable assembly - 1 pce



Collets size (Alu.)

mm	Inch	Order No.
50.8	2	AS170-50.8
63.5	2 1/2	AS170-63.5
76.2	3	AS170-76.2
88.9	3 1/2	AS170-88.9
101.6	4	AS170-101.6
114.3	4 1/2	AS170-114.3
139.7	5 1/2	AS170-139.7
152.4	6	AS170-152.4
165.1	6 1/2	AS170-165.1



Cable Assembly

- Positive cable
- Negative cable
- 7 pins AMP aviation plug
- 14 pins AMP aviation plug
- Water hose - 2 pcs
- Air hose

Welding head button

- Clockwise rotation
- Anticlockwise rotation
- Emergency STOP
- Gas testing
- Start



Features

- Available for outside diameters ranging from 2-6 1/2 in.
- Self fusion welding method
- Adopts sealed design, and the protection effect is more sufficient
- Flexible automatic centering fixture, precise positioning
- Suitable for tube welding of thin-walled carbon steel, stainless steel, titanium and titanium alloys
- Operation buttons on the welding head makes it is easy to use and suitable for on-site installation.

Dimension Figure

